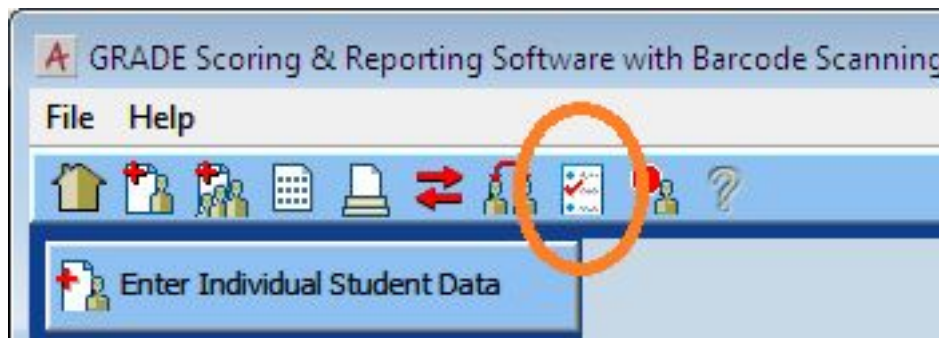


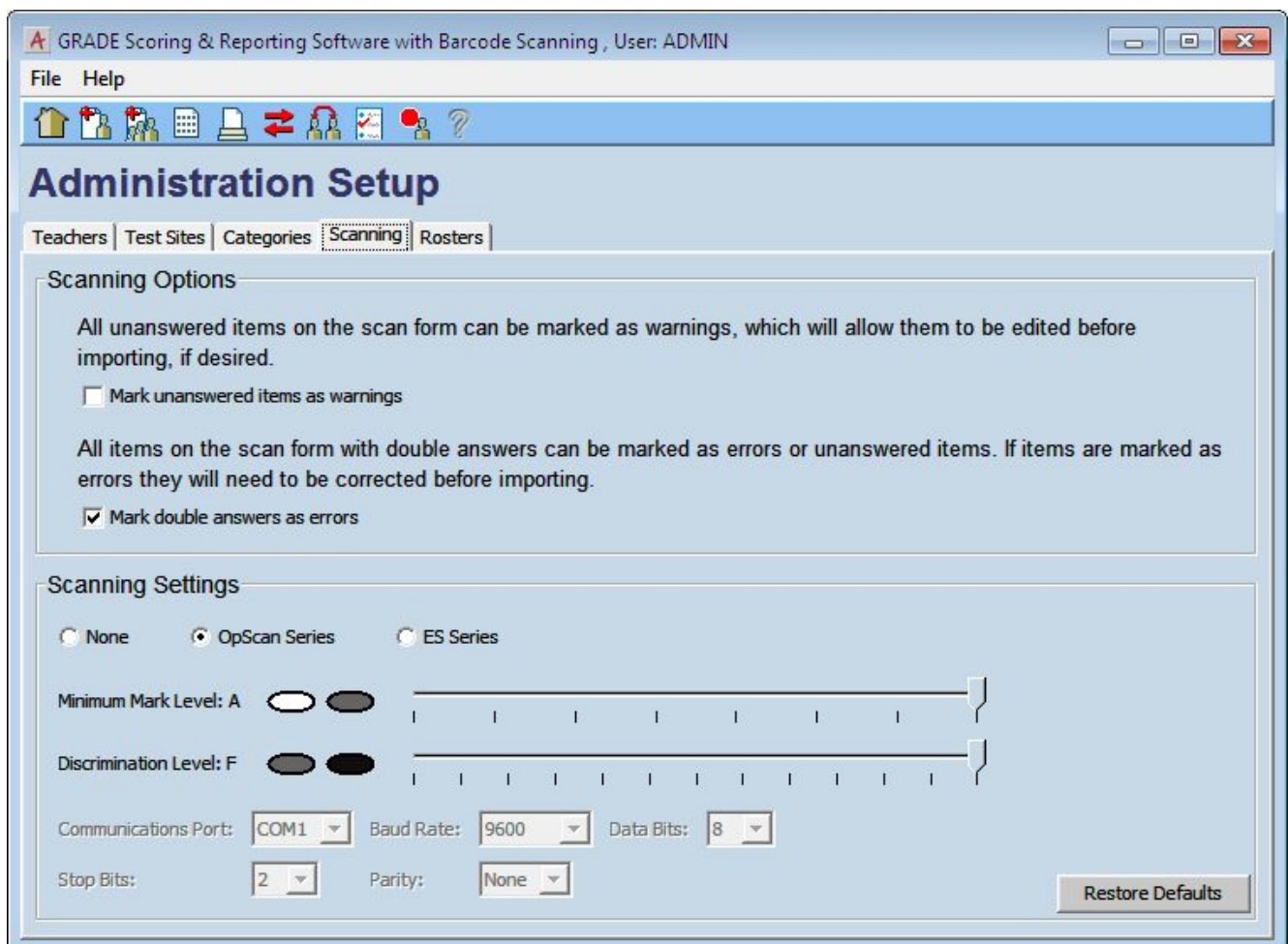
Setting up GRADE and GMADE for use with a scanner

Scanners are not enabled by default in GRADE and GMADE. If you are going to use a scanner with the software, follow these steps to enable it:

1. Click the Administration Setup icon (circled in orange below):



2. From the Administration Setup page, click the "Scanning" tab, then select the appropriate option for your scanner type:



You should now be able to select the 'from scanner' radio button from the Process Answer Sheets screen.

NOTE: The version of GRADE or GMADE that is installed **must** be a scanning version. To verify whether you have a scanning version or not, look at the text at the top of the window. If the word 'Scanning' is **NOT** there, a scanning version will need to be purchased and the key entered.

Last updated: 19 Sep, 2012

Software Support -> — G — -> GRADE and GMADE -> Setting up GRADE and GMADE for use with a scanner

<http://pearsonassessmentsupport.com/support/index.php?View=entry&EntryID=4531>